



# PRO Series | TCMP 1550 Coriolis Mass Flow Meter

## FEATURES

- Robust, no moving parts
- Customized installation length
- Excellent Repeatability ( $\pm 0.05\%$ ), Accuracy ( $\pm 0.1\%$ )
- Advanced Transmitter Technology  
Upgrade/modernize in place

## BENEFITS

- Increased productivity
- Considerable cost savings for installation
- Increased product quality
- Optimized lifecycle management

## FLOW RATE

Mass Flow Rate (max.):	1,550 kg/h [57 lb/min]
Volumetric Flow Rate (max.):	1,550 l/h [6.82 gpm, 234 bbl/d (US)]
Nominal Meter Size:	DN6 [ $\frac{1}{4}$ "]

## PRESSURE RATING

200 bar [2,900 psi]  
Option:  
345 bar [5,000 psi]

## ACCURACY (LIQUIDS)<sup>1)</sup>

Basic Accuracy (Mass Flow):	$\pm 0.1\%$ of flow rate
Repeatability (Mass Flow):	$\pm 0.05\%$ of flow rate
Basic Accuracy (Volume Flow):	$\pm 0.15\%$ of flow rate
Repeatability (Volume Flow):	$\pm 0.05\%$ of flow rate
Zero Stability:	$\pm 0.01\%$ of full scale

## ACCURACY (GASES)

Basic Accuracy (Mass Flow):	$\pm 0.5\%$ of flow rate
Repeatability (Mass Flow):	$\pm 0.25\%$ of flow rate

## DENSITY

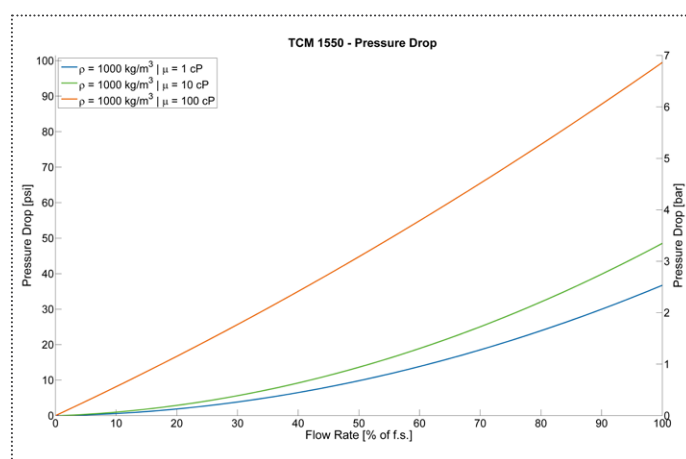
Density Range:	up to 2,500 kg/m <sup>3</sup> [2.5 g/cm <sup>3</sup> ]
Density Accuracy:	$\pm 1.0$ kg/m <sup>3</sup> [ $\pm 0.001$ g/cm <sup>3</sup> ]
Density Repeatability:	$\pm 0.5$ kg/m <sup>3</sup> [ $\pm 0.0005$ g/cm <sup>3</sup> ]

## TEMPERATURE

Process Temperature Range:	-40 °C ... +100 °C [-40 °F ... +212 °F] Option: -60 °C ... +200 °C [-76 °F ... +392 °F]
Temperature Accuracy:	$\pm 1$ °C $\pm 0.5\%$ of reading [ $\pm 1.8$ °F $\pm 0.5\%$ of reading]
Temperature Repeatability:	$\pm 0.2$ °C [ $\pm 0.36$ °F]

## MATERIALS (WETTED PARTS)

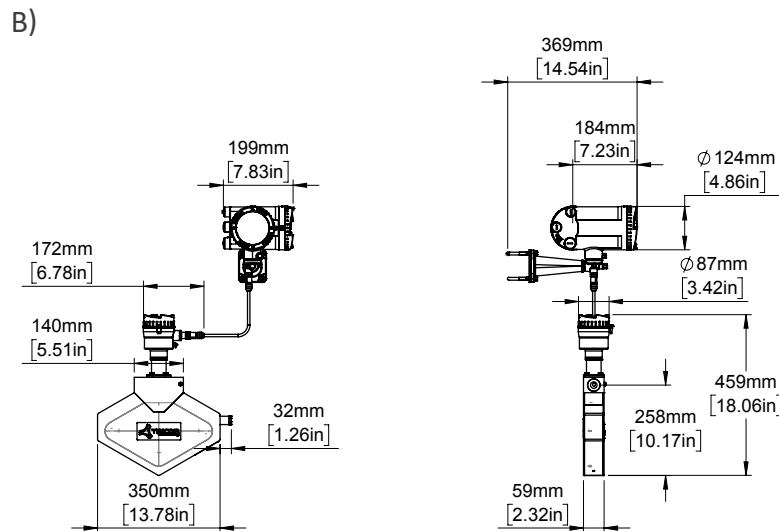
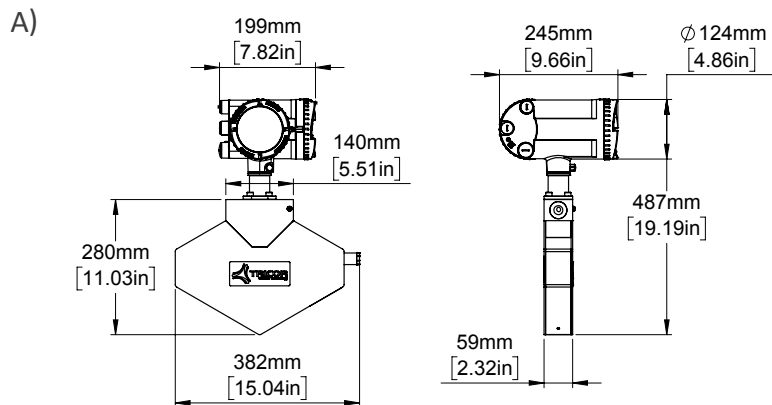
Tubes:	1.4404 [AISI 316L]
Case:	1.4404 [AISI 316L]
Flow Splitter:	1.4404 [AISI 316L]
Brazing Alloy:	BNi-2



<sup>1)</sup> Stated flow accuracy combines the effects of repeatability, linearity and hysteresis.



# PRO Series | TCMP 1550 Coriolis Mass Flow Meter



## METER DIMENSIONS<sup>2)</sup> AND WEIGHTS

### A) Compact Version

Weight: 13.2 kg [29.1 lb]

With meter mount in aluminum diecast housing

### B) Remote Version

Weight: 15.7 kg [34.6 lb]

With junction box and remote field mount

### Standard Process Connection

G½" thread (others on request)

## EX-CERTIFICATIONS<sup>6)</sup>

ATEX (Ex)	Zone 1: Group IIC or IIB, T2...T6
ATEX (Exn)	Zone 2: II 3G Ex nA IIC T2...T6 Gc
IECEX (Ex)	Zone 1: Group IIC or IIB, T2...T6
cCSAus (Ex1)	Class 1, Division 1: Group A, B, C, D or C, D, T2...T6

## BASIC TRANSMITTER<sup>3)</sup>



## REMOTE MOUNT<sup>5)</sup>



## COMPACT MOUNT<sup>4)</sup>



## DISPLAY ELECTRONICS

Power Supply:	20 ... 27 V DC ± 10% 100 ... 240 V AC ± 10 %
Graphical Display:	240 x 160 pixels
Configurable I/O:	Analog, Digital, Frequency, Relay
Interfaces:	PROFIBUS PA, PROFIBUS DP, HART 7.5, Modbus RS485 RTU
Enclosure Material:	Aluminum
Cable Gland:	½" NPT

<sup>2)</sup> Drawing of the Meter Dimensions reflects one standard connection, other connections on request (Installation length can vary depending on selected connection).

<sup>3)</sup> Weight: 1.4 kg [3.1 lb].

<sup>4)</sup> Weight: 4.5 kg [9.9 lb].

<sup>5)</sup> Weight: 7.0 kg [15.4 lb] with 3 m cable.

<sup>6)</sup> Release pending.

[www.tricorflow.com](http://www.tricorflow.com)



**N & S AMERICA**  
AW-Lake Company  
2440 W. Corporate Preserve Dr. #600  
Oak Creek WI 53154 | USA  
+1 414 574 4300

**ASIA PACIFIC & MIDDLE EAST**  
KEM Instruments SEA Pte. Ltd.  
UEN: 2017177922  
1003 Bukit Merah Central #06-32  
Singapore 159836  
+65 6274 1130

**CHINA**  
KEM flow technology (Beijing) Co., Ltd.  
Rm. 906, Block C, Ruipu Office Bldg, No. 15  
HongJunYingNan Road  
Chaoyang District, Beijing 100012 | China  
+86 10 84929567

**REST OF WORLD**  
KEM Küppers Elektromechanik GmbH  
Liebigstraße 5  
85757 Karlsfeld | Germany  
+49 8131 59391-100